

**SCP SCIENCE**

Providing Innovative Solutions To Analytical Chemists

# *Digi*PREP HT

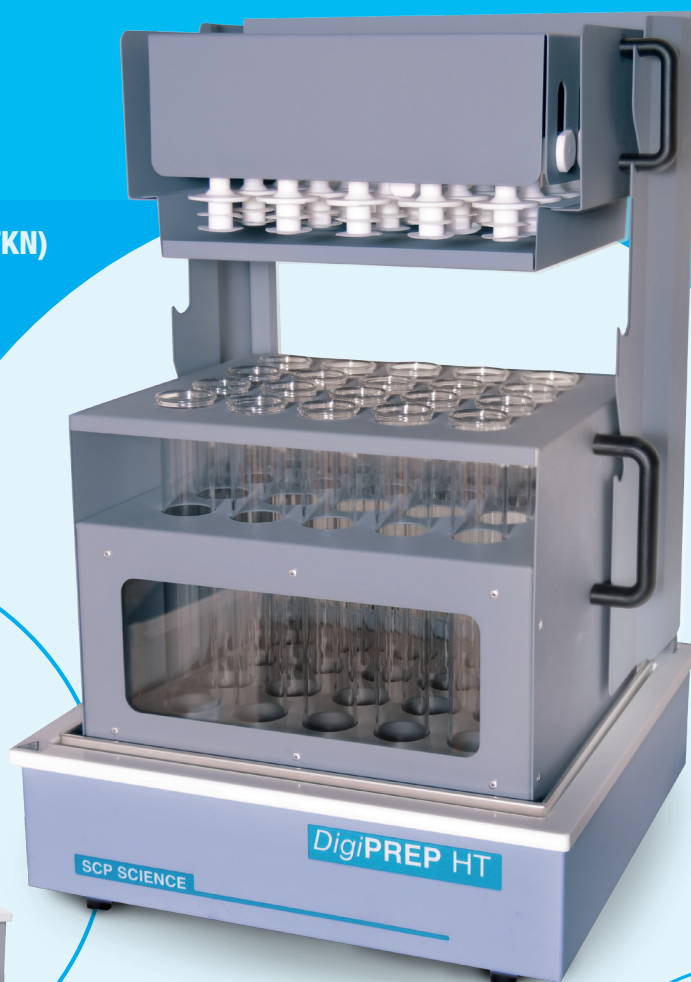
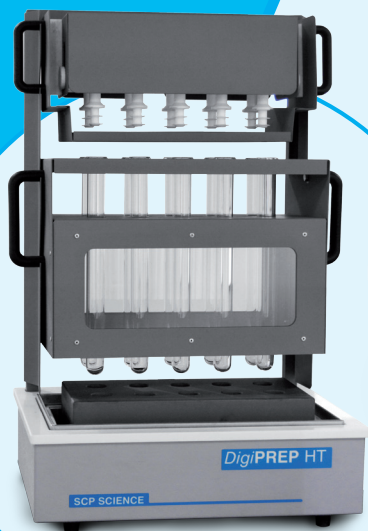
## HIGH TEMPERATURE DIGESTION

TOTAL KJELDAHL NITROGEN (TKN)

WEEE, RoHS

TOTAL PHOSPHATE

MANY MORE...



## SAMPLE DIGESTIONS

*DigiPREP* HT block digestion systems have been trusted in the field for 20 years. *DigiPREP* HT systems come with an insert rack with dual viewing windows, and an exhaust PTFE manifold, to manage fume waste. Systems offer the latest in hard anodized coated aluminum block technology, providing a superior resistance to corrosion. The tuned mat heater is mounted in such a way to prevent warpage and acid migration, and it covers 99% of the surface area, to ensure excellent temperature stability. The temperature range is from ambient to 450 °C. The built-in dual probe allows for one sensor to monitor and control the digestion temperature, while the other sensor validates the controller temperature using an independent measuring device.

## TOTAL CONTROL AT YOUR FINGERTIPS

### Colour Touch Screen Controller with USB

- ▶ Recommended for all multi-step, multi-temperature digestions such as Kjeldahl/TKN and WEEE RoHS digestions
- ▶ 6 steps (3 Time to Temperature, and 3 Time at Temperature) may be programmed
- ▶ 12 methods may be stored
- ▶ 4.7" color touch screen
- ▶ Automatic shut off at the end of a run
- ▶ Real time view of heating profile, with a graphical display, to 0.1 °C
- ▶ Time displayed to 0.1 seconds
- ▶ Block sensor or *DigiPROBE* can be calibrated with up to 5 points
- ▶ Data collection of the heating profile and detailed reports for laboratory audits are available, including: date and time of sample run, instrument serial number, temperature log in 15 second intervals, safety messages



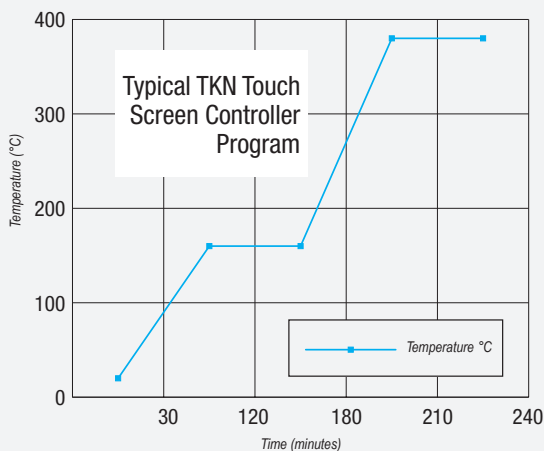
### KeyPad Controller

- ▶ Recommended for simple methods where a single set-point temperature is required (solid sample digestion with nitric acid, for example)
- ▶ Current block temperature and current time remaining in the digestion are displayed
- ▶ Built-in audible and visual alarms signal the end of a segment



### PC Classic Controller

- ▶ Control of the block via a computer connection, with the use of Go2Temp® software (access to advanced software features is provided)
- ▶ Comes complete with RS485 to USB communication capabilities
- ▶ One controller required per block, with the option of connecting up to 8 blocks together



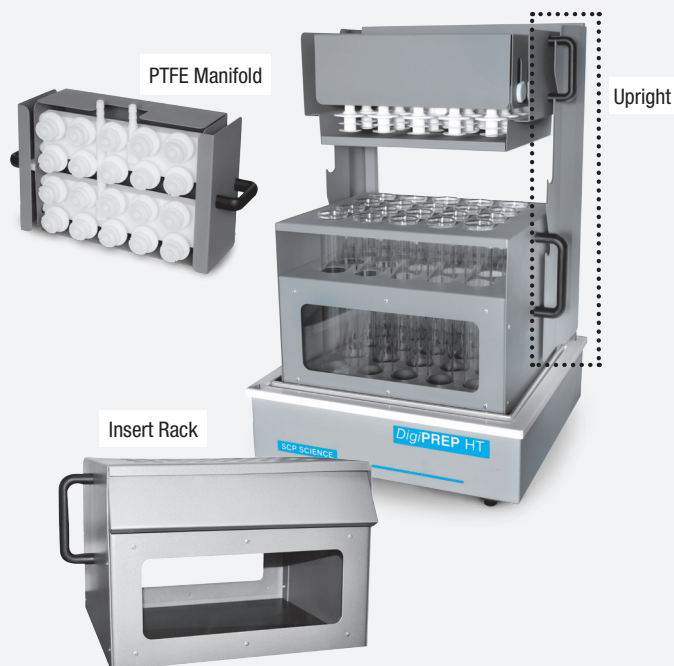
## DIGESTION MADE EASY...

*DigiPREP* HT systems are ideal for Kjeldahl/TKN, WEEE RoHS, and any application requiring high temperature digestions.

Available models:

- ▶ 40 position, using 100 ml tubes (for TKN and Total Phosphorus analyzed by segmented flow analyzers)
- ▶ 10 position, using 100 ml tubes (for TKN and Total Phosphorus analyzed by segmented flow analyzers)
- ▶ 20 position, using 250 ml tubes (for high level of protein by TKN, suitable for open digestions of mining samples)
- ▶ 10 position, using 250 ml tubes (for high level of protein by TKN, suitable for open digestions of mining samples)

Models are 230V, 12A. Systems come with an all PTFE manifold, high rise, and insert rack. Select the desired volume graduation on digestion vessels. The all PTFE Manifold was designed to prevent glass to glass connection. The tube adapters help to manage fume waste, and to promote reflux at the end of digestion. The two-tier dual zone insert rack and the high-rise configuration in sample cooling help to save space.



Description	Size	Catalog No.	Includes			Height (in / cm)
			PTFE Manifold	Insert Rack	Uprights	
<i>DigiPREP</i> HT100-40. 100 ml vessels, 40-position	17.75"W x 17.5"D / 45cm x 44.5cm	010-525-402	Y	Y	Y	27 / 68.5
		010-525-205	N	Y	Y	27 / 68.5
<i>DigiPREP</i> HT250-20. 250 ml vessels, 20-position	17.75"W x 17.5"D / 45cm x 44.5cm	010-520-422	Y	Y	Y	27 / 68.5
		010-520-225	N	Y	Y	27 / 68.5
<i>DigiPREP</i> HT100-10. 100 ml vessels, 10-position	17.75"W x 12.5"D / 45cm x 32cm	010-525-435	Y	Y	Y	27 / 68.5
		010-525-246	N	Y	Y	27 / 68.5
<i>DigiPREP</i> HT250-10. 250 ml vessels, 10-position	17.75"W x 12.5"D / 45cm x 32cm	010-525-445	Y	Y	Y	27 / 68.5
		010-525-244	N	Y	Y	27 / 68.5

## ACCESSORIES

Tubes (Please select desired tubes)		Accessories	
Catalog No.	Description	Catalog No.	Description
010-520-011	HT100 Digestion Tubes, uncalibrated	010-520-318	Ball Glass Condenser 100 ml
010-520-111	HT100 Digestion Tubes, calibrated (Custom tube calibrations available upon request) at the 25 ml and 50 ml mark	010-520-300	Glass Water Jet, Extra
010-520-085	HT100 Digestion Tubes, Quartz, uncalibrated	010-520-304	Boiling Stones, Extra
010-520-031	HT250 Digestion Tubes, uncalibrated	010-520-312	Ball Glass Condenser 250 ml
010-520-131	HT250 Digestion Tubes, calibrated * at the 50 ml and 100 ml mark	010-520-032	Heat deflector Shields for all racks
010-520-087	HT250 Digestion Tubes, Quartz, uncalibrated		

## UNIVERSAL FUME SCRUBBER (010-520-160)

Used to manage fume waste. All tubing, adapters and connectors are supplied.

Fumes are cooled as the exhaust fumes are pulled through the condenser. The condensate is collect in a easy to empty reservoir. The acid fumes are then drawn through a NaOH solution to scrub out the more of the acidic fumes. A charcoal filter is used to ensure 99.5% moisture and acid has been scrubbed from the air stream prior to being expelled into a fume hood.



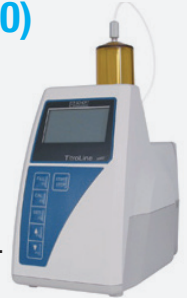
## DigiPREP STEAM DISTILLATION SYSTEMS

**DigiPREP** distillation systems range from manual to fully automatic. All systems can be used for the steam distillation of Kjeldahl ammonia solutions. In the Kjeldahl application, the additions of NaOH, H<sub>2</sub>O, and H<sub>3</sub>BO<sub>3</sub> may be automated. Samples can be distilled in 3 to 5 minutes. Variable steam power from 40% to 99% is offered for alcohol analysis in most models. Automatic drainage of hot sample waste provides safety and convenience.



## pH TITRATOR (010-035-050)

Accurate dosing technology and high-precision glass cylinders ensure correct results. An easy to read display shows the quantity of titrant used; delivered with 0.01 ml accuracy. May be connected to **DigiPREP** 500 distillation system to automate the final stage of Kjeldahl analysis.



DigiPREP Steam Distillation Systems	Model 100	Model 200	Model 300	Model 400	Model 500
Catalog Number	010-035-001	010-035-002	010-035-003	010-035-004	010-035-005
Automatic Addition of H <sub>2</sub> O	No	Yes	Yes	Yes	Yes
Automatic Addition of NaOH	Yes	Yes	Yes	Yes	Yes
Automatic Addition of H <sub>3</sub> BO <sub>3</sub>	No	No	No	Yes	Yes
Programmable Reaction Time	Yes	Yes	Yes	Yes	Yes
Programmable Distillation Time	Yes	Yes	Yes	Yes	Yes
Automatic Steam Generation	Yes	Yes	Yes	Yes	Yes
Variable Steam Generating capacity (40%-100%)	Yes	Yes	Yes	Yes	Yes
Automatic Removal of Sample Waste by Suction	No	No	Yes	Yes	Yes
Number of Programs	1	1	10	99	99

## SERVICE DEPARTMENT

Our friendly Service Department has over 30 years of experience in servicing instruments, and will be glad to assist you with any technical questions on our **DigiPREP** HT systems.



MK-HT\_BROCHURE-12-0-E

### CORPORATE HEADQUARTERS

Phone: +1 (514) 457-0701  
Fax: +1 (514) 457-4499

### CANADA / USA

Phone: +1 (800) 361-6820  
Fax: +1 (800) 253-5549

### FRANCE

Phone: +33 (0) 1 69 18 71 17  
Fax: +33 (0) 1 60 92 05 67

### GERMANY

Phone: +49 (0) 8342-89560-61  
Fax: +49 (0) 8342-89560-69

### UK

Phone: +44 (0) 7561-7028-90  
Phone: +1 (800) 368 6147